

MAXIFLO

CDLF

Vertical Multi-stage



CDLF series are vertical multi-stage stainless steel pumps designed for pumping clean water and similar liquids without solids, fibres & non-explosive. Ideal for water supply and liquid delivering in Cooling systems, Industrial cleaning, fishery, water treatment, as well as liquid boosting and circulation systems etc..

Distributed by :
PT PUTRA ANUGERAH MANDIRI
Jakarta

Quality Pumps

Working Conditions

- Temperature Range: -15~120°C
- Ambient Temperature: up to 40°C
- Max Operating Pressure: 10 Bar
- Min Suction Pressure: Min Safe Head NPSH + 0.5m

Model Nomenclature

CDLF2-40-2

- CDL — Vertical Multi-stage Light Duty Centrifugal Pump
- F — Stainless Steel for Liquid Contacted Parts
- 4 — Rated Capacity (m³/h)
- 40 — No. of Stages Times 10 (4 stage)
- 2 — No. of Expellers (For CDL32 only)

Typical applications

- Urban water supply and pressure boosting
- Industrial circulating system and processing systems
- Boiler water feed or condensate systems
- Environmental protection water treatment and infiltration analysis system
- Agricultural irrigation and dewatering
- Industrial building cleaning and other washing
- Others special applications



Instructions & Remarks:

- Common type is applicable for liquid conveying, circulation and boosting of hot and cold clean water, soft water;
- Stainless steel type is ideal for water with tiny content of alkali mineral, distilled water, water for swimming pool and solution with chloride, but the Max temperature of the liquid shall be reduced accordingly.
- All curves are obtained on the basis of 3-phase motor, 380V 50Hz, 2900rpm, voltage variable.
- Tests conducted with clean water @20°C, dynamic viscosity $\nu=1\text{mm}^2/\text{sec}$ under normal Atm.
- It's highly recommended to operate the pump within the range of Black Curves so as to prevent any overheating.
- Tolerance adopted with reference to ISO2584 Attachment B or ISO9906 Attachment A (CDL32)

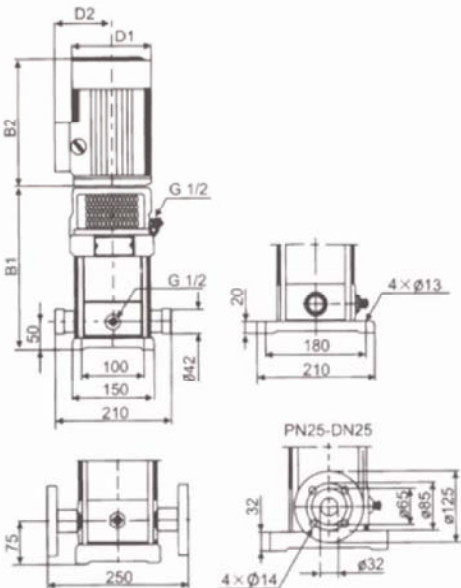
Performance Data for CDL1

Model	HP (kw)	Cap.(m ³ /h)	0.4	0.6	0.8	1	1.2	1.4	1.6	1.8	2
CDL1-20	0.37	Head (m)	13	12.5	12	11.5	11	10.5	10	9.5	9
CDL1-30	0.37		19	18	17.5	17	16.5	16	15	14	12
CDL1-40	0.37		24	23.5	23	22.5	21.5	21	19	18	16
CDL1-50	0.37		30	29.5	29	28	27	26	24	22	20
CDL1-60	0.37		36	35.5	35	33.5	33	31	28	26	23
CDL1-70	0.37		42	41	40.5	39	38	36	33	30	27
CDL1-80	0.55		48	47	46	45	43	41	38	34	30
CDL1-90	0.55		54	53	52	51	49	46	43	39	33
CDL1-100	0.55		60	59	58	57	54	51	48	43	36
CDL1-110	0.55		66	65	63	61	59	56	52	47	40
CDL1-120	0.75		72	71	69	67	64	61	57	51	44
CDL1-130	0.75		78	77	75	73	69	66	62	55	47
CDL1-150	0.75		89	88	86	84	79	76	71	63	55
CDL1-170	1.1		101	99	97	95	89	86	80	71	62
CDL1-190	1.1		113	110	108	106	99	96	89	79	69
CDL1-210	1.1		124	122	120	117	110	106	98	87	75
CDL1-230	1.1		137	133	131	128	121	116	107	96	82
CDL1-250	1.5		149	145	143	139	131	126	116	104	89
CDL1-270	1.5		161	157	155	150	141	136	125	112	95
CDL1-300	1.5		178	175	171	166	157	150	139	124	106
CDL1-330	2.2	196	192	188	183	173	165	154	137	118	
CDL1-360	2.2	214	210	205	200	190	181	169	151	130	



Piping Connections
 Cartridge: DN32mm
 Threaded: ZG1 1/4"
 Flange: PN25/DN25

Installation Drawings



Model	Dimensions (mm)					Weight (Kg)
	B1	B2	B1+B2	D1	D2	
CDL1-20	220	225	445	145	110	20
CDL1-30	238	225	463	145	110	20
CDL1-40	256	225	481	145	110	20
CDL1-50	274	225	499	145	110	20
CDL1-60	292	225	517	145	110	20
CDL1-70	310	225	535	145	110	20
CDL1-80	328	225	553	145	110	22
CDL1-90	346	225	571	145	110	22
CDL1-100	364	225	589	145	110	22
CDL1-110	382	225	607	145	110	22
CDL1-120	405	225	630	145	110	25
CDL1-130	423	225	648	145	110	25
CDL1-150	459	225	684	145	110	25
CDL1-170	495	245	740	170	150	28
CDL1-190	531	245	776	170	150	28
CDL1-210	567	245	812	170	150	30
CDL1-230	603	245	848	170	150	33
CDL1-250	656	245	901	170	150	40
CDL1-270	692	245	937	170	150	40
CDL1-300	746	245	991	170	150	40
CDL1-330	800	265	1065	180	155	45
CDL1-360	854	265	1119	180	155	45

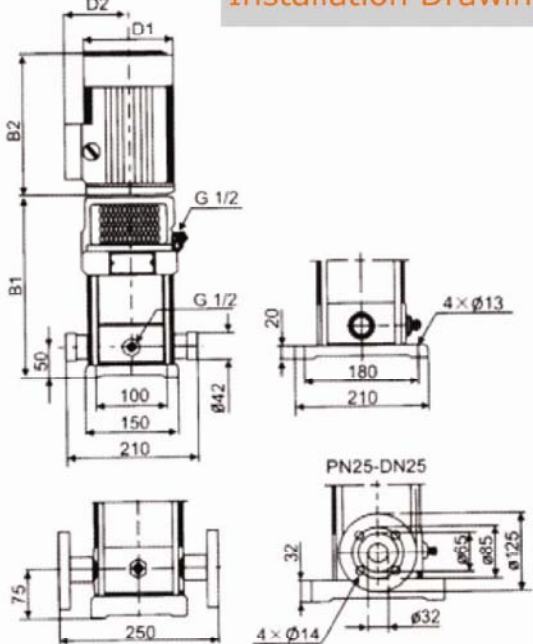
Performance Data for CDL2

Model	HP (kw)	Cap.(m ³ /h)	1	1.2	1.6	2	2.4	2.8	3.2	3.5
CDL2-20	0.37	Head (m)	18	17	16	15	13	12	10	8
CDL2-30	0.37		27	26	24	22	20	18	15	12
CDL2-40	0.55		36	35	33	30	26	24	20	16
CDL2-50	0.55		45	43	40	37	33	30	24	20
CDL2-60	0.75		53	52	50	45	40	36	30	24
CDL2-70	0.75		63	61	57	52	47	41	35	28
CDL2-90	1.1		80	78	73	67	61	54	45	37
CDL2-110	1.1		98	95	89	82	73	64	54	44
CDL2-130	1.5		116	114	106	98	89	78	65	52
CDL2-150	1.5		134	130	123	112	100	90	73	60
CDL2-180	2.2		161	157	148	136	121	108	91	76
CDL2-220	2.2		197	192	180	165	148	130	110	90
CDL2-260	3		232	228	214	198	179	158	130	110



Installation Dimensions

Installation Drawings



Model	Dimensions (mm)					Weight (kg)
	B1	B2	B1+B2	D1	D2	
CDL2-20	220	225	445	145	110	20
CDL2-30	238	225	463	145	110	20
CDL2-40	256	225	481	145	110	20
CDL2-50	274	225	499	145	110	20
CDL2-60	297	225	522	145	110	25
CDL2-70	315	225	540	145	110	25
CDL2-90	351	245	596	170	150	30
CDL2-110	387	245	632	170	150	30
CDL2-130	440	240	685	170	150	35
CDL2-150	476	240	721	170	150	35
CDL2-180	530	265	795	180	155	40
CDL2-220	602	265	867	180	155	45
CDL2-260	682	290	972	180	155	50

Piping Connections

Cartridge: DN32mm
 Threaded: ZG1 1/4"
 Flange: PN25/DN25

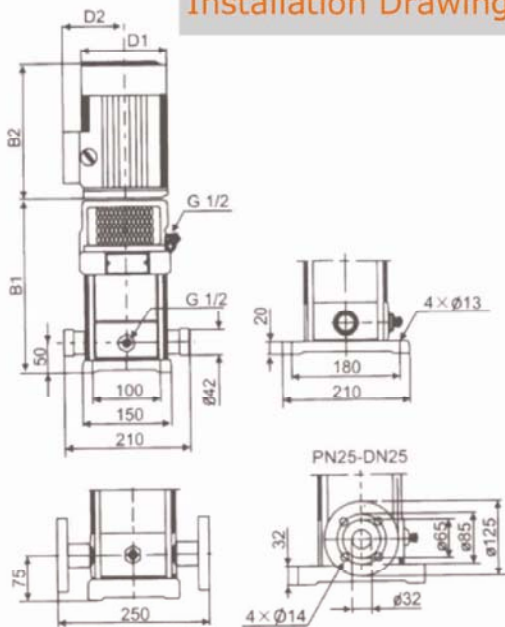
Performance CDL3

Mode	HP(kw)	Cap.(m)	1.2	1.6	2	2.4	2.8	3	3.2	3.6	4
CDL3-20	0.37	Head (m)	13	11.5	11	10.5	10	9	8	7	6
CDL3-30	0.37		19	18.5	18	16.5	15	14	13	11	9
CDL3-40	0.37		25	24	23	21.5	20	19	18	15	12
CDL3-50	0.37		31	30	29	27	25	23	22	19	16
CDL3-60	0.55		36	35	34	32	30	28	27	23	19
CDL3-70	0.55		43	41	39	37	34	32	31	27	22
CDL3-80	0.75		49	47	45	43	39	37	35	31	25
CDL3-90	0.75		55	53	51	48	45	42	40	35	28
CDL3-100	0.75		61	59	57	54	50	47	45	39	31
CDL3-110	1.1		67	64	61	58	54	51	49	42	34
CDL3-120	1.1		73	70	67	63	58	55	52	45	37
CDL3-130	1.1		78	76	73	69	64	60	57	49	40
CDL3-150	1.1		90	88	84	79	73	69	66	57	46
CDL3-170	1.5		103	100	96	90	83	79	75	64	52
CDL3-190	1.5		115	112	107	100	92	88	83	72	58
CDL3-210	2.2		128	124	119	112	102	98	91	79	64
CDL3-230	2.2		140	135	130	122	112	107	100	86	70
CDL3-250	2.2		151	147	141	131	122	116	109	94	76
CDL3-270	2.2		164	159	152	143	132	124	117	101	82
CDL3-290	2.2		175	170	163	153	142	133	126	109	88
CDL3-310	3	187	182	175	165	153	142	135	116	94	
CDL3-330	3	199	194	187	176	163	151	145	125	100	
CDL3-360	3	218	212	204	192	178	168	159	137	109	



Installation Dimensions

Installation Drawings



Piping Connections
 Cartridge: DN32mm
 Threaded: ZG1 1/4"
 Flange: PN25/DN25

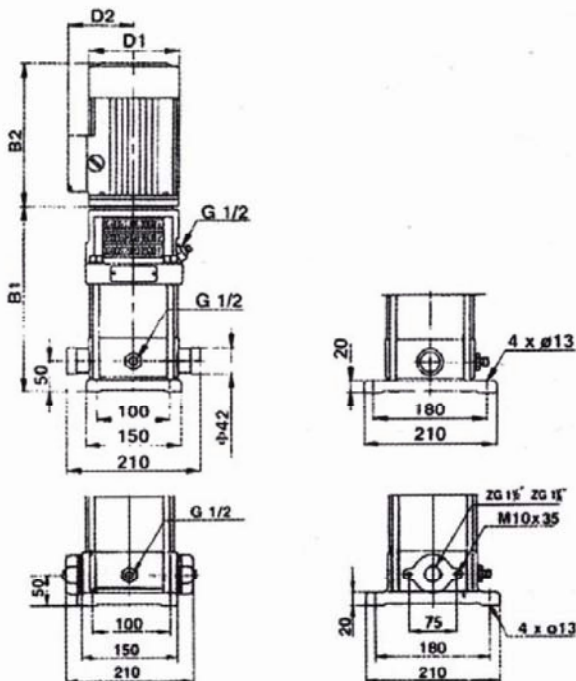
Model	Dimension (mm)					Wt (.kg)
	B1	B2	B1+B2	D1	D2	
CDL3-20	220	225	445	145	110	20
CDL3-30	238	225	463	145	110	20
CDL3-40	256	225	481	145	110	20
CDL3-50	274	225	499	145	110	20
CDL3-60	292	225	517	145	110	22
CDL3-70	310	225	535	145	110	22
CDL3-80	333	225	558	145	110	22
CDL3-90	351	225	576	145	110	22
CDL3-100	369	225	594	145	110	22
CDL3-110	387	245	632	170	150	25
CDL3-120	405	245	650	170	150	25
CDL3-130	423	245	668	170	150	25
CDL3-150	459	245	704	170	150	25
CDL3-170	512	245	757	170	150	30
CDL3-190	548	245	793	170	150	30
CDL3-210	584	265	849	180	155	35
CDL3-230	620	265	885	180	155	40
CDL3-250	656	265	921	180	155	40
CDL3-270	692	265	957	180	155	40
CDL3-290	728	265	993	180	155	40
CDL3-310	772	290	1062	180	155	45
CDL3-330	808	290	1098	180	155	50
CDL3-360	862	290	1152	180	155	50

Performance Data for CDL4

MODEL	MOTOR (KW)	CAP. M ³ /H	1.5	2	3	4	5	6	7	8
			HEAD (m)							
CDL4-20	0.37		19	18	17	15	13	10	8	6
CDL4-30	0.55		28	27	26	24	20	18	13	10
CDL4-40	0.75		38	36	34	32	27	24	19	13
CDL4-50	1.1		47	45	43	40	34	31	23	17
CDL4-60	1.1		56	54	52	48	41	37	28	20
CDL4-80/7	1.5		66	63	61	56	48	43	33	24
CDL4-80	1.5		74	72	70	64	55	50	38	27
CDL4-100	2.2		96	90	87	81	71	62	48	34
CDL4-120	2.2		114	108	104	95	85	75	58	41
CDL4-160/14	3		136	126	122	112	101	89	68	48
CDL4-160	3		152	144	140	129	115	101	78	55
CDL4-190	4		183	171	168	153	137	122	93	67
CDL4-200	4		211	200	192	178	160	138	108	79



Installation Drawings



Installation Dimensions

Model	DIMENSIONS (mm)					WEIGHT (kg)
	B ₁	B ₂	B ₁ +B ₂	D ₁	D ₂	
CDL4-20	235	225	460	145	110	20
CDL4-30	265	225	490	145	110	20
CDL4-40	295	225	520	145	110	20
CDL4-50	325	245	570	170	150	20
CDL4-60	350	245	595	170	150	20
CDL4-80/7	420	245	665	170	150	25
CDL4-80	420	245	665	170	150	25
CDL4-100	475	265	740	170	150	30
CDL4-120	530	265	795	180	155	30
CDL4-160/14	645	290	935	180	155	35
CDL4-160	645	290	935	180	155	35
CDL4-190	725	325	1050	210	180	35
CDL4-220	805	325	1130	210	180	40

Piping Connections

Cartridge: DN32mm

Threaded: ZG1 1/4" or ZG1 1/2"

Flange: PN25/DN32