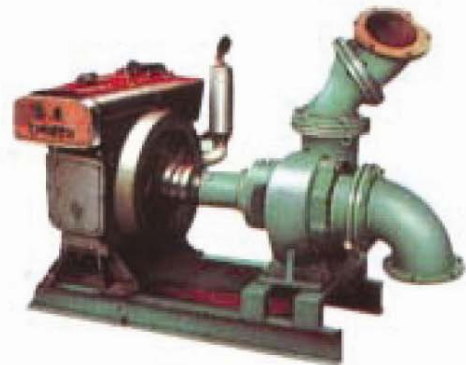
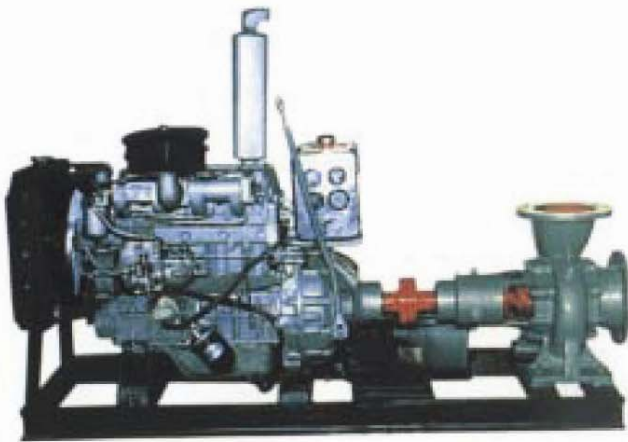


MAXIFLO

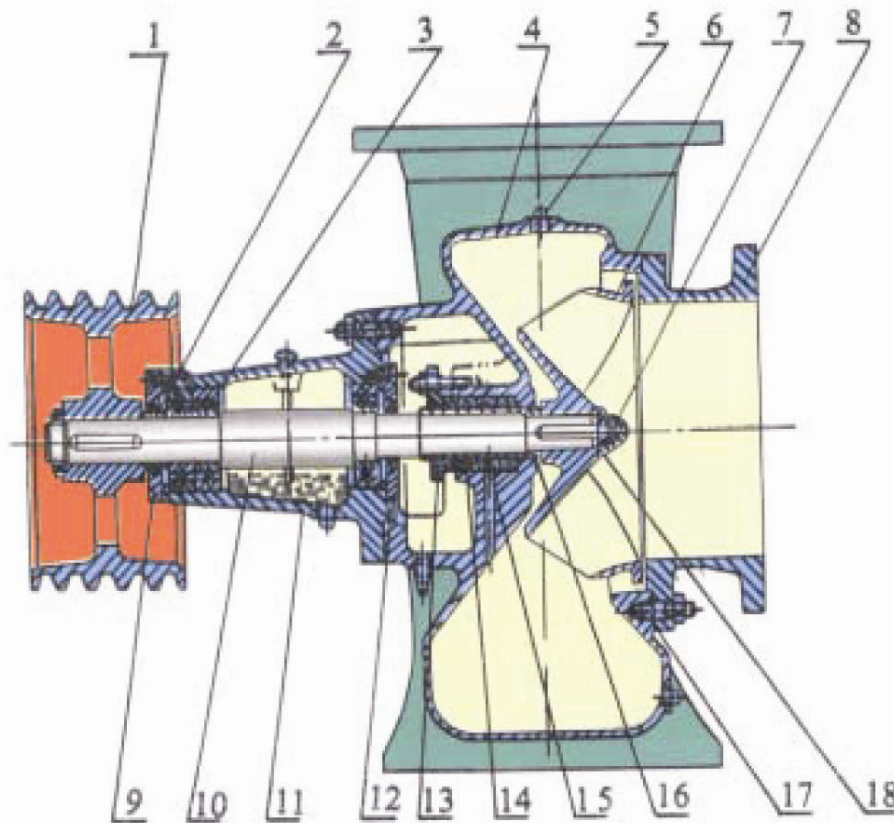
HW Mixed Flow Volute Case Pump



HW horizontal mixed flow pumps are constructed in single stage single suction volute casing, applicable to clean water with a temperature below 80°C. Ideal for farmland irrigation, water supply and drainage in industrial and urban projects.

MAXIFLO

Configuration Drawing



- 1— Pulley or Coupling
- 2— Spacer Sleeve
- 3— Bearing
- 4— Pump Casing
- 5— Priming Hole & Screw Plug
- 6— Impeller
- 7— Impeller Cap
- 8— Pump Cover
- 9— Rear Cover
- 10— Pump Shaft
- 11— Bearing Housing
- 12— Front Cover
- 13— Packing Gland
- 14— Packing
- 15— Packing Ring
- 16— Shaft Sleeve
- 17— Gasket
- 18— Washer

Performance Data

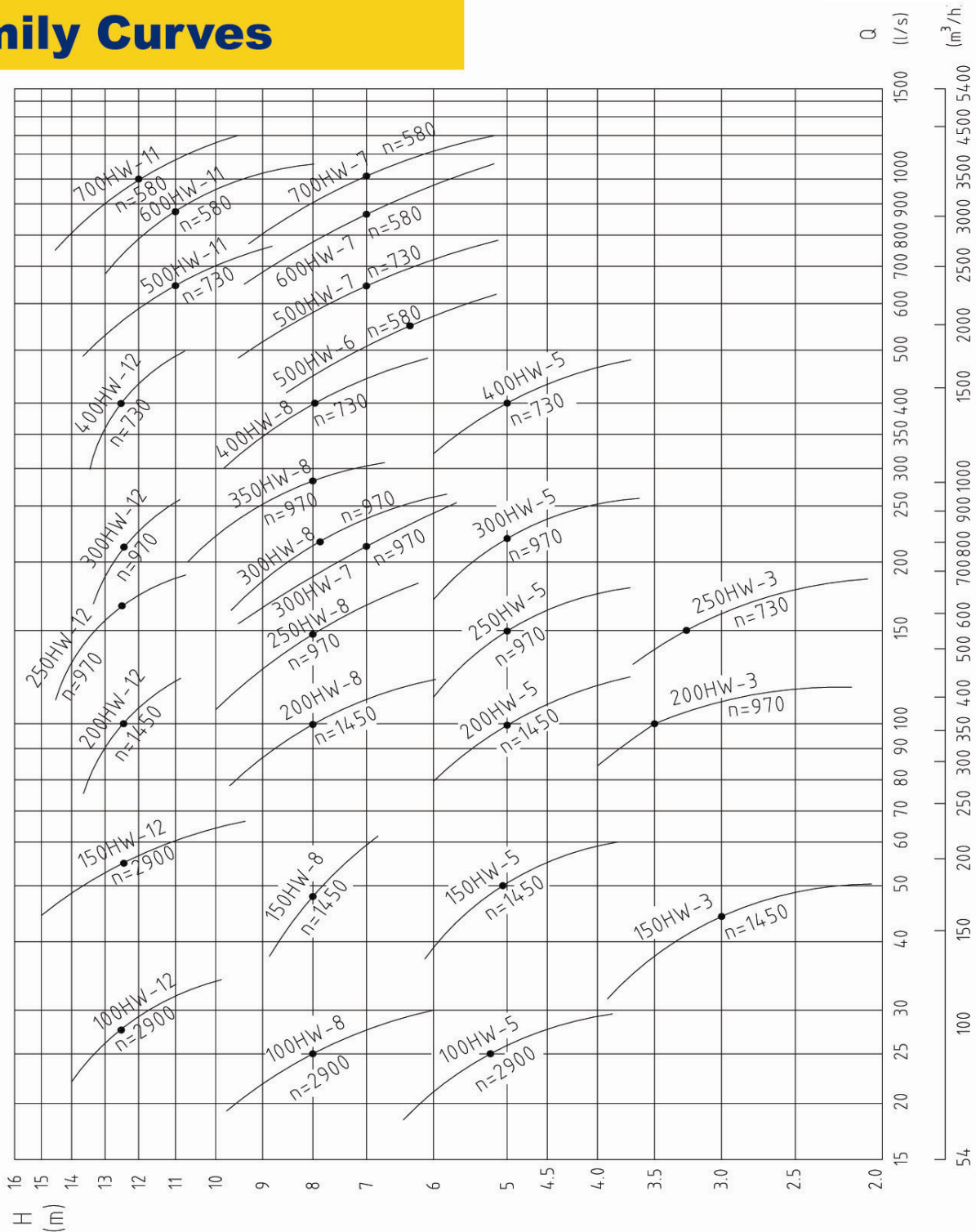
Flow Range: 90 - 7200m³/hr
Head Range: 5 -21m
Fluid Temp.: 0 - 80°C

Model Nomenclature

e.g.: Model 250HW - 8
250 — Suction Dia. (mm)
HW — Mixed Flow Pump
8 — Single Stage Head (m)

MAXIFLO

Family Curves



PT. PUTRA ANUGERAH MANDIRI
Jl. Agung Utara Raya Blok R/62, Sunter
Tlp. 62 21 645 1248
Fax. 62 21 645 8877